



Madison  
Credit  
Union

# Checks & Balances

Winter 2024



**Budget a  
little too**

**TIGHT?**

**Consolidate your  
high-interest debt  
into one manageable  
payment.**

**Contact MCU lending  
to get breathing room  
with your debt today.**

**[lending@madisoncu.com](mailto:lending@madisoncu.com)**

## LOANPAY XPRESS GOT AN UPGRADE

On December 11th, LoanPay Xpress (LPX) got a much needed upgrade with an improved member experience and more features. New features include: paying as a guest; viewing all loans under one LPX account; and accessing LPX directly from MCU's online banking.

### Important Things to Keep in Mind

- Each loan can be connected to only one LPX account.
- If you have a recurring payment set up, you will not have to do anything at this time. However, everyone will have to re-register by creating a new LPX account the next time they log in.
- When you re-register your LPX account and add your loans, all loan history will transfer over (payment methods, etc.).

Visit the MCU blog to read the full article:  
[Madisoncu.com/loanpay-xpress-is-getting-an-upgrade/](https://www.madisoncu.com/loanpay-xpress-is-getting-an-upgrade/)

## Two Co-op Shared Branch ITMs Now Open



Dupaco CU has opened two shared branch ITMs. On the **west side at: 7701 Mineral Point Rd.**, and on the **east side at: 3762 E. Washington Ave.** Dupaco CU's in-branch service still does not support co-op shared branching services, only the ATM machines in the drive-up are supported.

If a member visits the machine outside of Dupaco's business hours or doesn't choose to speak with a representative through the machine, they will be charged a \$2.50 convenience fee.

In order to use the ITMs as a fee-free, shared branch location:

- ITMs must be used during Dupaco's business hours: (Mon. - Fri. 8am – 6pm) & (Sat. 8am – 1pm).
- Members must choose to 'Talk with a Representative'.

**You're never too old...  
to play in the snow!**

Benefits of playing in the snow:

1. Promotes good physical health
2. Enhances brain function
3. Strengthens the immune system
4. Engages all the senses
5. Super fun!



**Want to play in the snow like a pro?**

MCU offers recreational vehicle  
loans for snowmobiles.

**Apply online! [MadisonCU.com](https://www.madisoncu.com)**



# 87<sup>th</sup> Annual Meeting

APPETIZERS WITH THE CREDIT UNION

## We'll have:

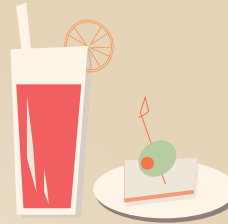
Hors d'Oeuvres      More Cash Prizes  
A Full Cash Bar      Fun Games

## Where and When:

The Goodman Community Center in the Brassworks Building  
Bea & Lau Christensen Room  
4:30pm on February 12th

(There is parking available on the street,  
the Goodman parking lot, and across the  
street in the St. Bernard Catholic Church parking lot.)

*New Location!!  
Now in the other  
Goodman Building*



## Board Candidates: (two seats & two candidates)



**Larry Schultz** - An MCU member for 5 years, Larry holds an Associate's Degree in Business Supervision and is currently employed with the UWPD as a security supervisor. He has many years of experience as a board member for groups such as: The Albany Lion's Club, the Milwaukee Police Dept. Athletics, and C.I.R.C.L.E.

Larry wants to use his position on the MCU Board of Directors as a way of giving back to the credit union and its members after the dedication it has shown to him.

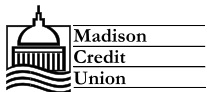


**Julie Baker** - A recently retired motor coach operator from Madison Metro Transit, Julie's outstanding dedication and performance during her 33-year career serving the City gives her the experience of working with a diverse population both on the bus and within the structure of the workplace.

Julie firmly believes credit unions continue to serve a vital role in a healthy community. The philosophy of the credit union closely parallels that of Metro "not for profit, not for charity, but for service". An MCU member for 34 years, Julie loves the credit union's uniqueness and is excited to help us continue to grow.

RSVP via mail using the form below or online at:  
<https://madisoncu.com/annualmeeting/>

**RSVP by  
January 26th**



## 87<sup>th</sup> Annual Meeting RSVP

Full name

Phone number

Email

Number of guests attending,  
including yourself

Please return to:

Annual Meeting, Madison Credit Union,  
949 E. Washington Ave., Madison, WI 53703

## Contact Info

### Main Office:

949 East Washington Ave.  
Ph: 608-266-4750  
creditunion@madisoncu.com  
www.MadisonCU.com

### Lobby Hours:

Monday - Friday: 8:30am - 5:00pm

### Drive Up Hours:

Monday - Friday: 7:30am - 5:00pm  
Saturday: 9:00am - 12:00pm

### Upcoming Closings:

January 1st  
January 15th

### CU\*Talk Phone Number:

1-800-860-5704

### Lost/Stolen ATM/Debit Card

1-800-523-4175

Madison Credit Union

is a proud member of  
the Co-op Shared  
Branching Network.

with over 5,000 branches  
nationwide. To find a location  
near you, visit:

[www.co-opcreditunions.org](http://www.co-opcreditunions.org)



### Comments Are Welcome

Checks & Balances is published quarterly  
to help members make informed choices  
for their financial health. We welcome  
your comments.

Send comments to:

creditunion@cityofmadison.com or  
Madison Credit Union,  
949 East Washington Ave.,  
Madison, WI 53703



Insured by NCUA

EQUAL HOUSING  
OPPORTUNITY

## Bank easier with the Madison CU Mobile App

- ✓ Deposit Checks Remotely
- ✓ Transfer Money
- ✓ Check Balances
- ✓ Apply for a Loan
- ✓ And More...

